

Applies To The Singer Athena 1200 – 2000 Touch Tronic 2005A & Other with related board



Note Disclaimer ¹

When turning the stitch length or stitch width dials the machine may not respond. If the machine is sewing without electronic issues, this may help, and it may not. For what's worth...the old sandpaper trick may solve the problem.

Reference the right photo from the schematic and the two knobs done in red. These are the two that control the length and width.

Underneath each is a contact spring, indicated on the left photo with red arrows. Right contact bottom center, Left contact just to the left of 5 on the dial. Peer inside some...you'll see them. Trick is to insert some wet/dry sandpaper (used some, not new and not wet either...should be dry), about 2000 or 2500, or higher grit is best, between the dial and spring; with sanding side down, paper side against the plastic dial. Rub the paper back and forth some to "restore" the contact springs contact area against the plastic dial.

DO NOT SAND LIKE CRAZY, IT ONLY TAKES ABOUT 4 TO 6 SWIPES AND FINISH...STOP...REMOVE SANDPAPER 😊

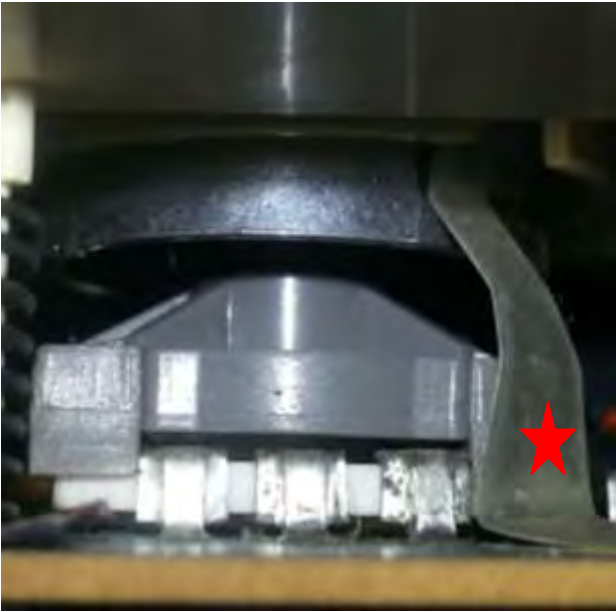
Sometimes the plastic dials may have a little gunk build up on them. Flatten out a Q-Tip with some rubbing alcohol and insert as best possible to clean the back area of the plastic dial. THE Q-TIP DOES NOT NEED TO DRIPPING WET, JUST DAMP IS FINE

I've inserted photos below to help show in greater detail of what I'm trying to convey.

Again, do note that this is not always the fix, but it may help in most instances.

Best of luck 😊

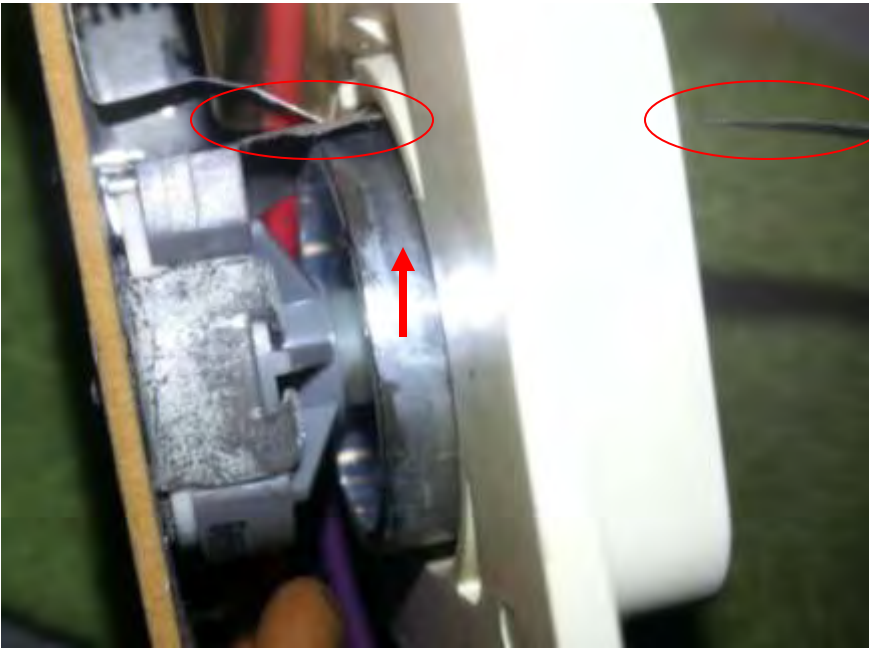
¹ Disclaimer – TNT Repair and its owner(s) will not be responsible should you damage your machine attempting this procedure. Please do not attempt if you are uncertain about your mechanical skills. Best performed with the front cover removed, but can be done through the dial panel entrance



Left contact spring



Right contact spring



Sandpaper inserted between dial and contact spring
Red arrow – notice the gunk/path the contact spring has left over the years of use
If possible, try to clean that with the Q-Tip